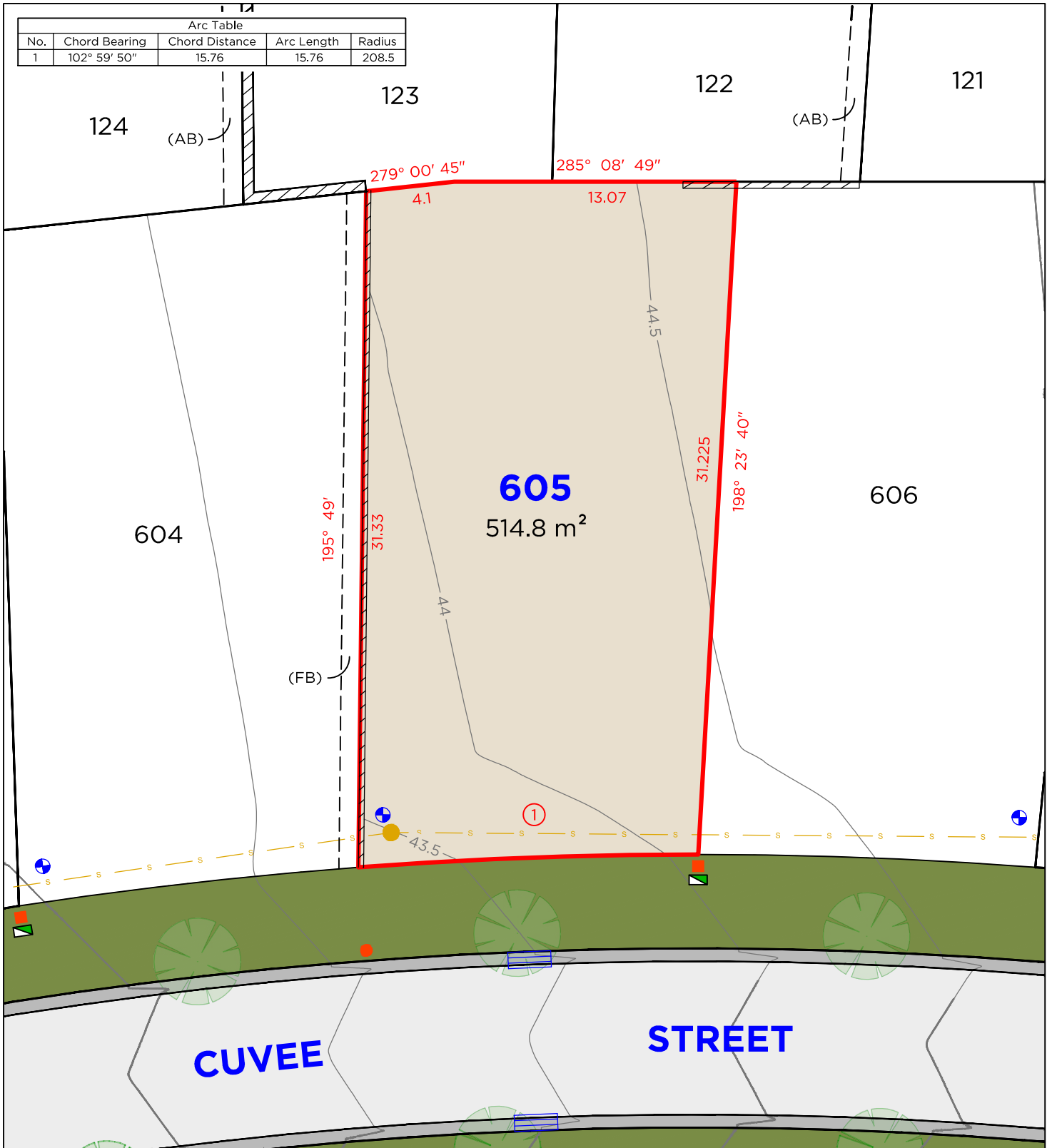


# LOT 605



## LEGEND

<span style="color: red;">—</span>	BOUNDARY LINE
<span style="color: grey;">---</span>	ADJACENT BOUNDARY
<span style="color: black;">---</span>	EASEMENT
<span style="color: yellow;">S</span>	SEWER
<span style="color: blue;">W</span>	WATERMAIN
<span style="color: blue;">---</span>	STORMWATER
<span style="color: purple;">GAS</span>	GAS LINE
<span style="color: brown;">---</span>	RETAINING WALL
<span style="color: blue;">●</span>	STOP VALVE

<span style="color: green;">■</span>	TELSTRA / NBN PIT
<span style="color: orange;">■</span>	ELECTRICAL PILLAR
<span style="color: red;">●</span>	LIGHT POLE
<span style="color: yellow;">●</span>	SEWER MAN HOLE
<span style="color: blue;">●</span>	WATER METER
<span style="color: blue;">□</span>	DRAINAGE PIT
<span style="color: blue;">□</span>	KERB INLET PIT
<span style="color: blue;">⊗</span>	HYDRANT

## EASEMENTS

(AB)	EASEMENT FOR SUPPORT 0.9 WIDE
(FB)	EASEMENT FOR SUPPORT 0.9 WIDE

## DISCLAIMER

- THIS PLAN HAS BEEN COMPILED FROM DESIGN PLANS AT THE SCALE/S STATED. IT IS RECOMMENDED THAT A SURVEY IS UNDERTAKEN PRIOR TO THE PREPARATION OF CONSTRUCTION DRAWINGS. THE PLAN IS SUITABLE FOR DESIGN ONLY & MAY NOT BE SUITABLE FOR ANY OTHER PURPOSE OR FOR USE AT ANY OTHER SCALES/S.
  - THE BOUNDARIES & SERVICES SHOWN ARE APPROXIMATE ONLY. FURTHER SURVEY WILL BE REQUIRED IF CONSTRUCTION IS TO TAKE PLACE ON OR ADJACENT TO THE BOUNDARIES.
  - UTILITIES LOCATIONS ARE SUBJECT TO FINAL APPROVAL.
- NOTE** • ANTICIPATED LOT CLASSIFICATION IS H2

**DELFS LASCELLES**  
CONSULTING SURVEYORS



260 MAITLAND ROAD, MAYFIELD NSW 2304  
P: (02) 4964 4886  
E: admin@delacs.com.au

DATE: 11.12.2025

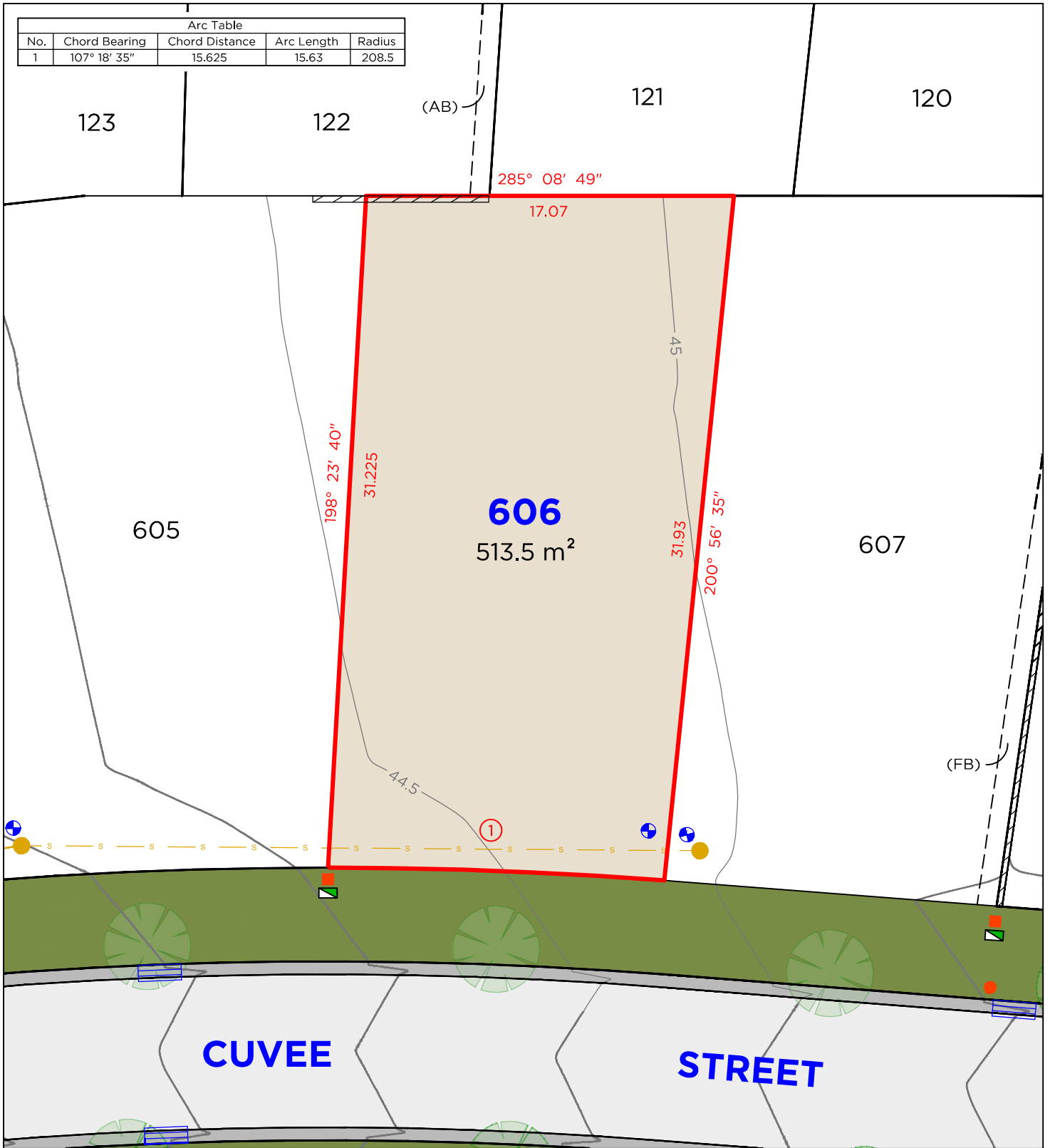
DATUM: A.H.D.

SCALE: 1:250 (A4)

PROJECT No. **25519**



# LOT 606



## LEGEND

<span style="color: red;">—</span>	BOUNDARY LINE		TELSTRA / NBN PIT
<span style="color: grey;">---</span>	ADJACENT BOUNDARY		ELECTRICAL PILLAR
<span style="color: black;">---</span>	EASEMENT		LIGHT POLE
<span style="color: yellow;">S</span>	SEWER		SEWER MAN HOLE
<span style="color: blue;">W</span>	WATERMAIN		WATER METER
<span style="color: blue;">---</span>	STORMWATER		DRAINAGE PIT
<span style="color: purple;">GAS</span>	GAS LINE		KERB INLET PIT
<span style="color: black;">---</span>	RETAINING WALL		HYDRANT
	STOP VALVE		

## EASEMENTS

- (AB) EASEMENT FOR SUPPORT 0.9 WIDE  
(FB) EASEMENT FOR SUPPORT 0.9 WIDE

## DISCLAIMER

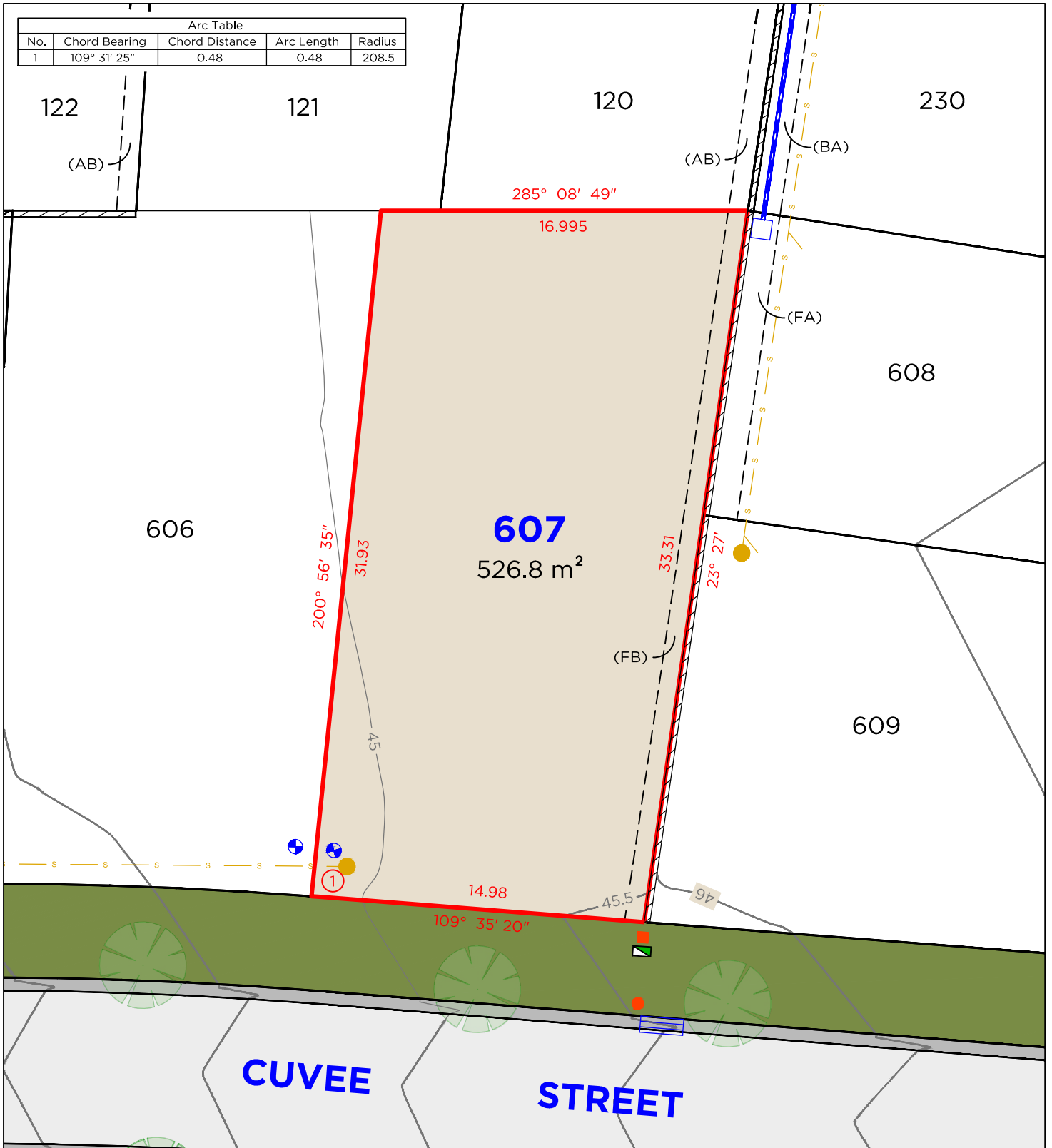
- THIS PLAN HAS BEEN COMPILED FROM DESIGN PLANS AT THE SCALE/S STATED. IT IS RECOMMENDED THAT A SURVEY IS UNDERTAKEN PRIOR TO THE PREPARATION OF CONSTRUCTION DRAWINGS. THE PLAN IS SUITABLE FOR DESIGN ONLY & MAY NOT BE SUITABLE FOR ANY OTHER PURPOSE OR FOR USE AT ANY OTHER SCALES/S.
  - THE BOUNDARIES & SERVICES SHOWN ARE APPROXIMATE ONLY. FURTHER SURVEY WILL BE REQUIRED IF CONSTRUCTION IS TO TAKE PLACE ON OR ADJACENT TO THE BOUNDARIES.
  - UTILITIES LOCATIONS ARE SUBJECT TO FINAL APPROVAL.
- NOTE** • ANTICIPATED LOT CLASSIFICATION IS H2

**DELFS LASCELLES**  
CONSULTING SURVEYORS





# LOT 607



## LEGEND

<span style="color: red;">—</span>	BOUNDARY LINE	<span style="color: green;">■</span>	TELSTRA / NBN PIT
<span style="color: black;">---</span>	ADJACENT BOUNDARY	<span style="color: orange;">■</span>	ELECTRICAL PILLAR
<span style="color: black;">---</span>	EASEMENT	<span style="color: red;">●</span>	LIGHT POLE
<span style="color: yellow;">S</span>	SEWER	<span style="color: yellow;">●</span>	SEWER MAN HOLE
<span style="color: blue;">W</span>	WATERMAIN	<span style="color: blue;">●</span>	WATER METER
<span style="color: blue;">---</span>	STORMWATER	<span style="color: blue;">■</span>	DRAINAGE PIT
<span style="color: pink;">---</span>	GAS LINE	<span style="color: blue;">■</span>	KERB INLET PIT
<span style="color: black;">---</span>	RETAINING WALL	<span style="color: blue;">⊗</span>	HYDRANT
<span style="color: blue;">●</span>	STOP VALVE		

## EASEMENTS

- (AB) EASEMENT FOR SUPPORT 0.9 WIDE
- (FB) EASEMENT FOR SUPPORT 0.9 WIDE

## DISCLAIMER

- THIS PLAN HAS BEEN COMPILED FROM DESIGN PLANS AT THE SCALE/S STATED. IT IS RECOMMENDED THAT A SURVEY IS UNDERTAKEN PRIOR TO THE PREPARATION OF CONSTRUCTION DRAWINGS. THE PLAN IS SUITABLE FOR DESIGN ONLY & MAY NOT BE SUITABLE FOR ANY OTHER PURPOSE OR FOR USE AT ANY OTHER SCALES/S.
- THE BOUNDARIES & SERVICES SHOWN ARE APPROXIMATE ONLY. FURTHER SURVEY WILL BE REQUIRED IF CONSTRUCTION IS TO TAKE PLACE ON OR ADJACENT TO THE BOUNDARIES.
- UTILITIES LOCATIONS ARE SUBJECT TO FINAL APPROVAL.

**NOTE** • ANTICIPATED LOT CLASSIFICATION IS H2

**DELFS LASCELLES**  
CONSULTING SURVEYORS





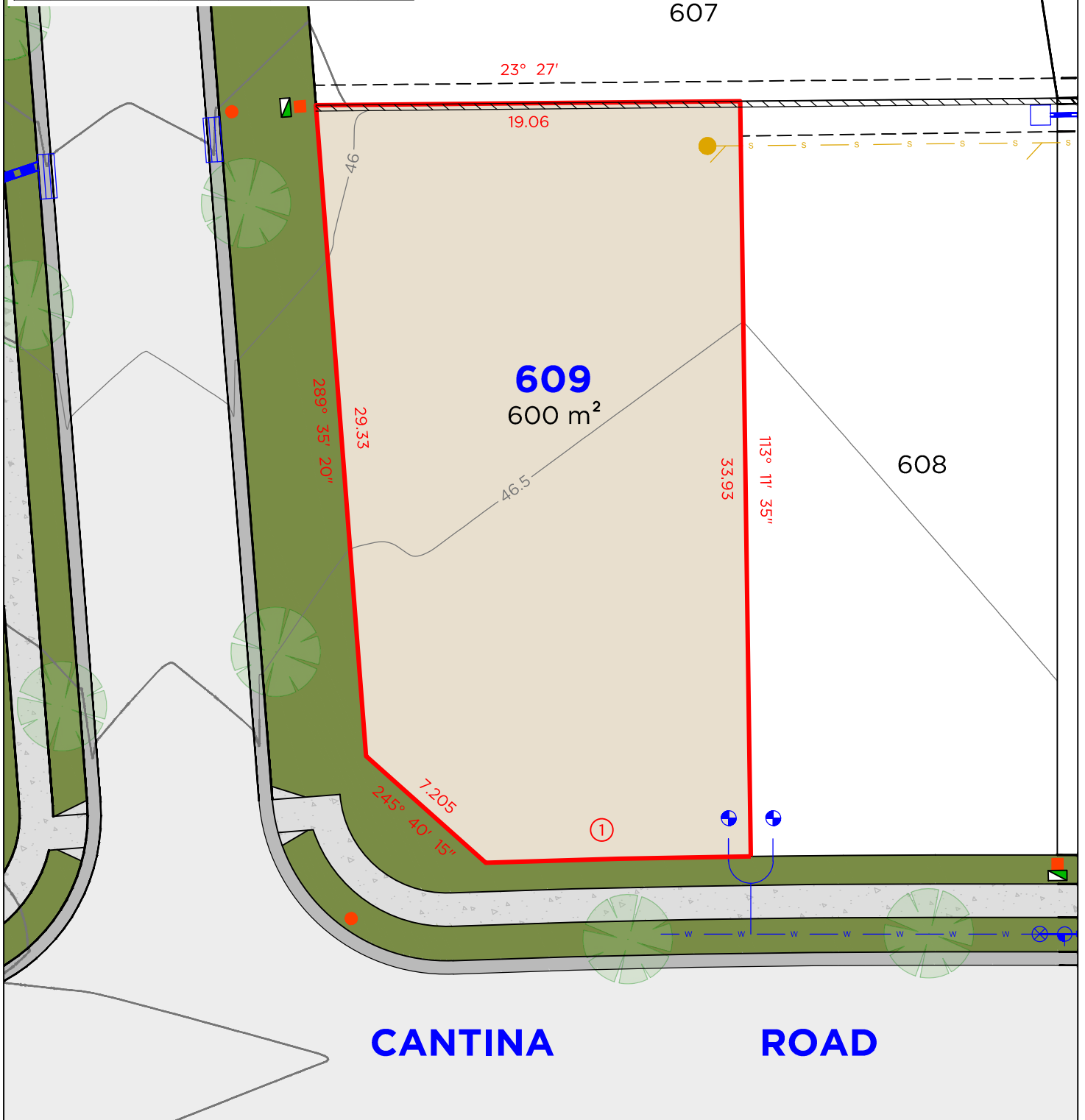




# LOT 609



Arc Table				
No.	Chord Bearing	Chord Distance	Arc Length	Radius
1	202° 37' 05"	11.905	11.905	593.5



## LEGEND

<span style="color: red;">—</span>	BOUNDARY LINE
<span style="color: grey;">---</span>	ADJACENT BOUNDARY
<span style="color: blue;">---</span>	EASEMENT
<span style="color: yellow;">S</span>	SEWER
<span style="color: blue;">W</span>	WATERMAIN
<span style="color: blue;">W</span>	STORMWATER
<span style="color: pink;">GAS</span>	GAS LINE
<span style="color: brown;">/ / /</span>	RETAINING WALL
<span style="color: blue;">●</span>	STOP VALVE

<span style="color: green;">■</span>	TELSTRA / NBN PIT
<span style="color: orange;">■</span>	ELECTRICAL PILLAR
<span style="color: yellow;">●</span>	LIGHT POLE
<span style="color: blue;">●</span>	SEWER MAN HOLE
<span style="color: blue;">●</span>	WATER METER
<span style="color: blue;">■</span>	DRAINAGE PIT
<span style="color: blue;">■</span>	KERB INLET PIT
<span style="color: blue;">⊗</span>	HYDRANT

## EASEMENTS

- (BA) EASEMENT TO DRAIN WATER 1.5 WIDE  
 (AB) EASEMENT FOR SUPPORT 0.9 WIDE

## DISCLAIMER

- THIS PLAN HAS BEEN COMPILED FROM DESIGN PLANS AT THE SCALE/S STATED. IT IS RECOMMENDED THAT A SURVEY IS UNDERTAKEN PRIOR TO THE PREPARATION OF CONSTRUCTION DRAWINGS. THE PLAN IS SUITABLE FOR DESIGN ONLY & MAY NOT BE SUITABLE FOR ANY OTHER PURPOSE OR FOR USE AT ANY OTHER SCALES/S.
- THE BOUNDARIES & SERVICES SHOWN ARE APPROXIMATE ONLY. FURTHER SURVEY WILL BE REQUIRED IF CONSTRUCTION IS TO TAKE PLACE ON OR ADJACENT TO THE BOUNDARIES.
- UTILITIES LOCATIONS ARE SUBJECT TO FINAL APPROVAL.

**NOTE** • ANTICIPATED LOT CLASSIFICATION IS H2

**DELFS LASCELLES**  
CONSULTING SURVEYORS



260 MAITLAND ROAD, P: (02) 4964 4886  
MAYFIELD NSW 2304 E: admin@delacs.com.au

DATE: 11.12.2025

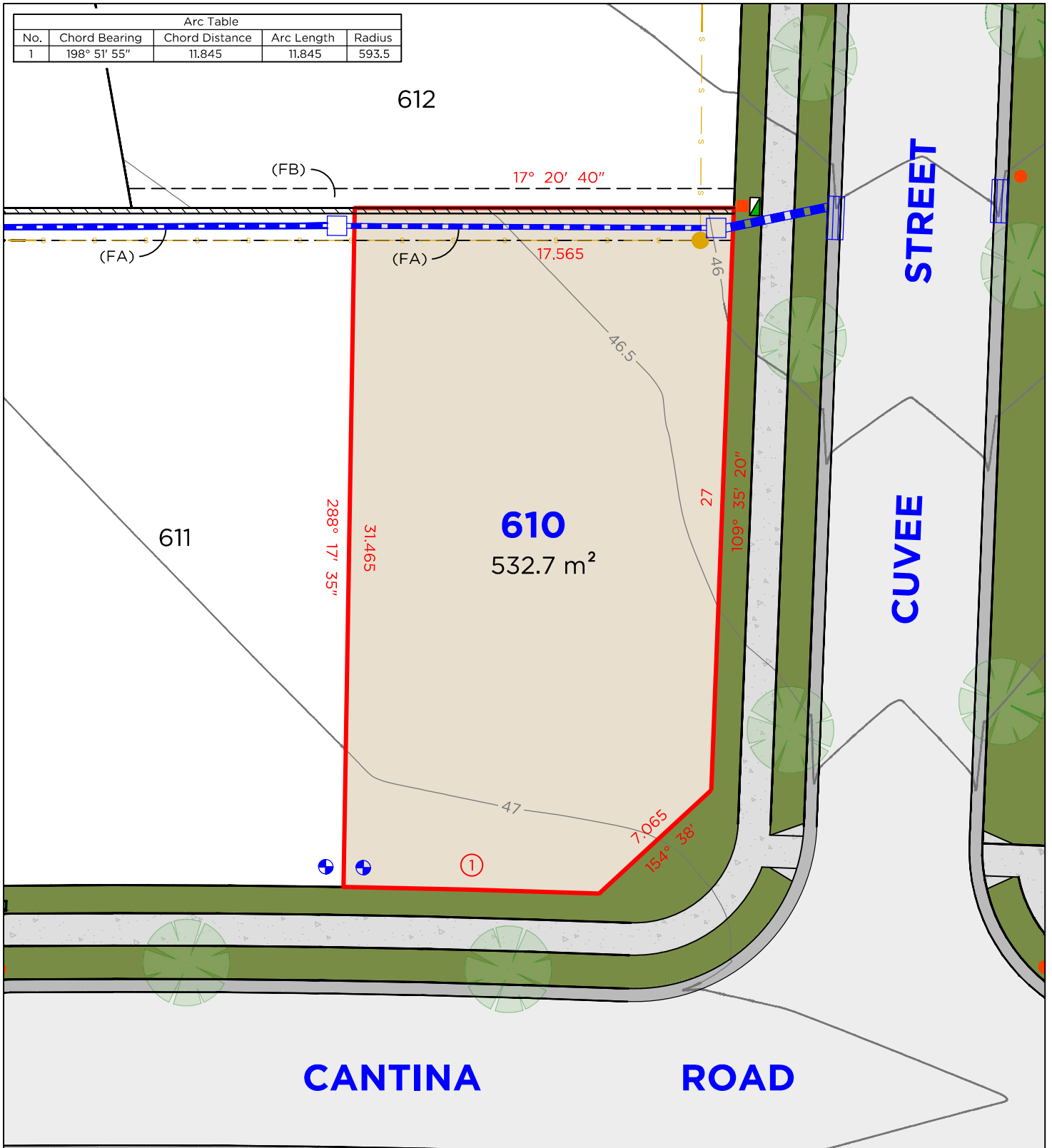
DATUM: A.H.D.

SCALE: 1:250 (A4)

PROJECT No. **25519**



# LOT 610



## LEGEND

<span style="color: red;">—</span>	BOUNDARY LINE	<span style="color: green;">■</span>	TELSTRA / NBN PIT
<span style="color: black;">---</span>	ADJACENT BOUNDARY	<span style="color: orange;">■</span>	ELECTRICAL PILLAR
<span style="color: black;">---</span>	EASEMENT	<span style="color: red;">●</span>	LIGHT POLE
<span style="color: yellow;">S</span>	SEWER	<span style="color: yellow;">●</span>	SEWER MAN HOLE
<span style="color: blue;">W</span>	WATERMAIN	<span style="color: blue;">●</span>	WATER METER
<span style="color: blue;">---</span>	STORMWATER	<span style="color: blue;">□</span>	DRAINAGE PIT
<span style="color: magenta;">GAS</span>	GAS LINE	<span style="color: blue;">□</span>	KERB INLET PIT
<span style="color: black;">---</span>	RETAINING WALL	<span style="color: blue;">⊗</span>	HYDRANT
<span style="color: blue;">●</span>	STOP VALVE		

## EASEMENTS

- (BA) EASEMENT TO DRAIN WATER 1.5 WIDE  
(AB) EASEMENT FOR SUPPORT 0.9 WIDE

## DISCLAIMER

- THIS PLAN HAS BEEN COMPILED FROM DESIGN PLANS AT THE SCALE/S STATED. IT IS RECOMMENDED THAT A SURVEY IS UNDERTAKEN PRIOR TO THE PREPARATION OF CONSTRUCTION DRAWINGS. THE PLAN IS SUITABLE FOR DESIGN ONLY & MAY NOT BE SUITABLE FOR ANY OTHER PURPOSE OR FOR USE AT ANY OTHER SCALES/S.
- THE BOUNDARIES & SERVICES SHOWN ARE APPROXIMATE ONLY. FURTHER SURVEY WILL BE REQUIRED IF CONSTRUCTION IS TO TAKE PLACE ON OR ADJACENT TO THE BOUNDARIES.
- UTILITIES LOCATIONS ARE SUBJECT TO FINAL APPROVAL.

**NOTE** • ANTICIPATED LOT CLASSIFICATION IS H2

**DELFS LASCELLES**  
CONSULTING SURVEYORS

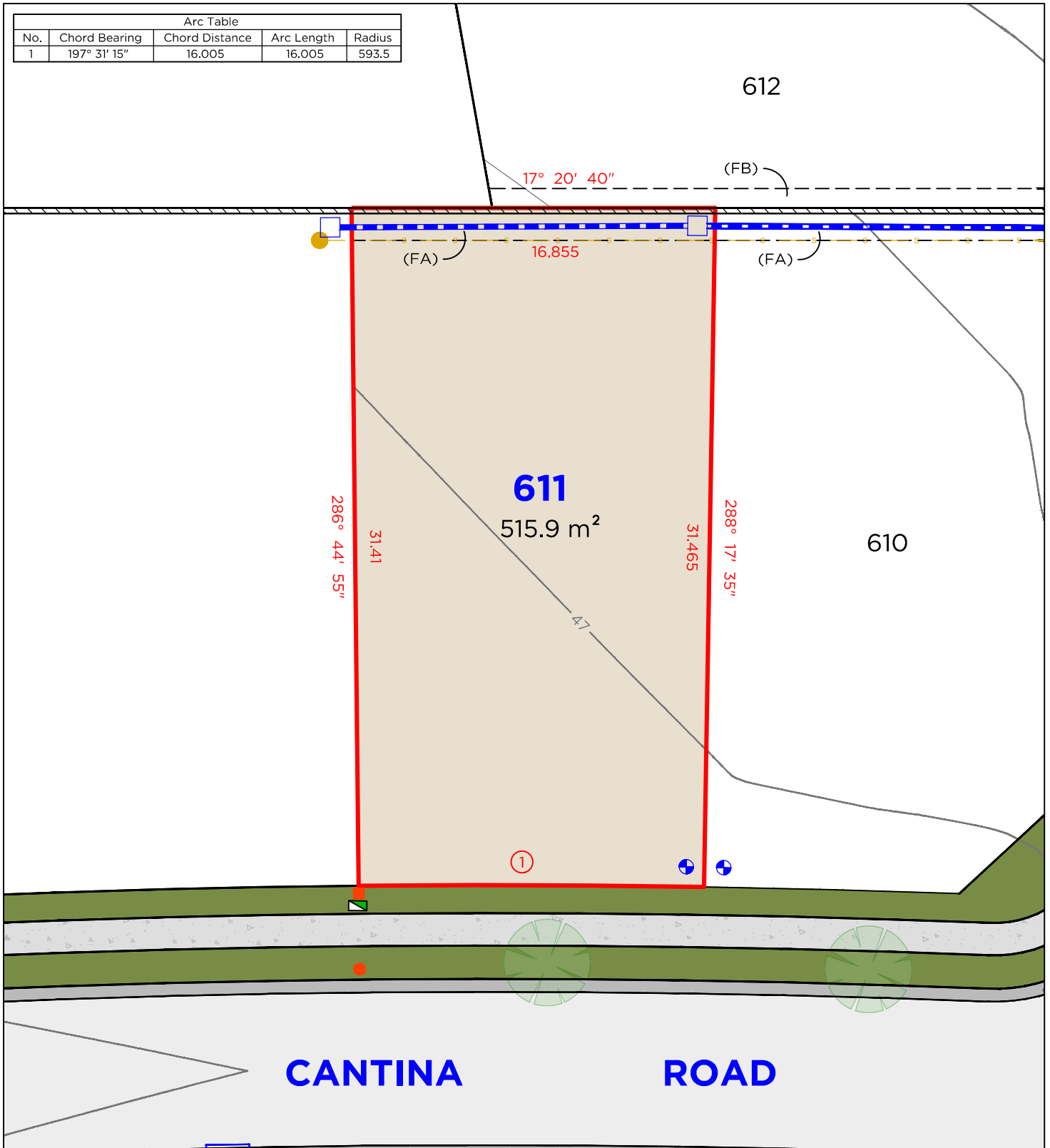




# LOT 611



Arc Table				
No.	Chord Bearing	Chord Distance	Arc Length	Radius
1	197° 31' 15"	16.005	16.005	593.5



## LEGEND

<span style="color: red;">—</span>	BOUNDARY LINE
<span style="color: black;">---</span>	ADJACENT BOUNDARY
<span style="color: black;">---</span>	EASEMENT
<span style="color: yellow;">S</span>	SEWER
<span style="color: blue;">W</span>	WATERMAIN
<span style="color: blue;">---</span>	STORMWATER
<span style="color: magenta;">GAS</span>	GAS LINE
<span style="color: black;">---</span>	RETAINING WALL
	STOP VALVE

	TELSTRA / NBN PIT
	ELECTRICAL PILLAR
	LIGHT POLE
	SEWER MAN HOLE
	WATER METER
	DRAINAGE PIT
	KERB INLET PIT
	HYDRANT

## EASEMENTS

- (BA) EASEMENT TO DRAIN WATER 1.5 WIDE  
(AB) EASEMENT FOR SUPPORT 0.9 WIDE

## DISCLAIMER

- THIS PLAN HAS BEEN COMPILED FROM DESIGN PLANS AT THE SCALE/S STATED. IT IS RECOMMENDED THAT A SURVEY IS UNDERTAKEN PRIOR TO THE PREPARATION OF CONSTRUCTION DRAWINGS. THE PLAN IS SUITABLE FOR DESIGN ONLY & MAY NOT BE SUITABLE FOR ANY OTHER PURPOSE OR FOR USE AT ANY OTHER SCALES/S.
- THE BOUNDARIES & SERVICES SHOWN ARE APPROXIMATE ONLY. FURTHER SURVEY WILL BE REQUIRED IF CONSTRUCTION IS TO TAKE PLACE ON OR ADJACENT TO THE BOUNDARIES.
- UTILITIES LOCATIONS ARE SUBJECT TO FINAL APPROVAL.

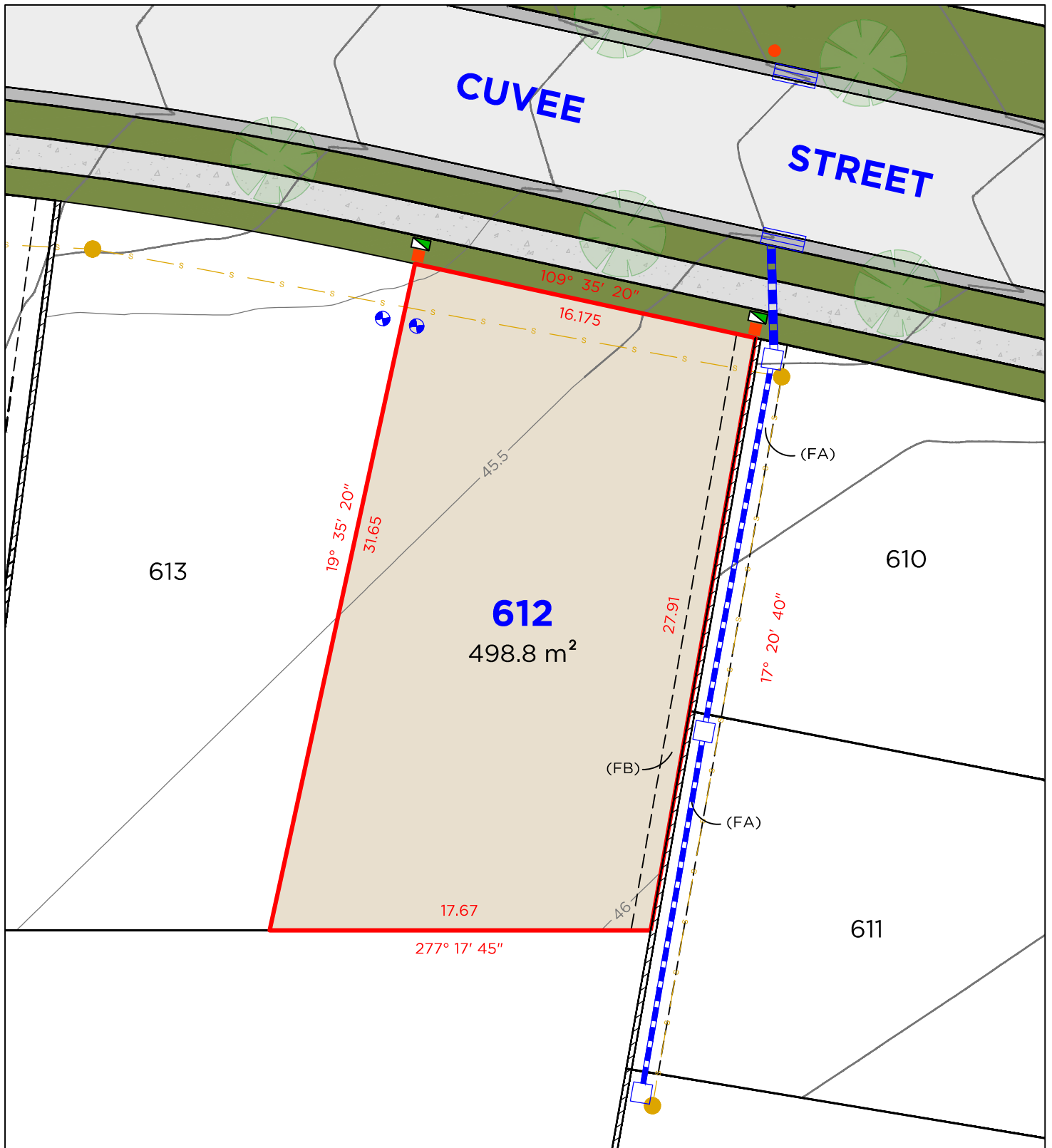
**NOTE** • ANTICIPATED LOT CLASSIFICATION IS H2

**DELFS LASCELLES**  
CONSULTING SURVEYORS





# LOT 612



## LEGEND

<span style="color: red;">—</span>	BOUNDARY LINE
<span style="color: black;">---</span>	ADJACENT BOUNDARY
<span style="color: black;">---</span>	EASEMENT
<span style="color: yellow;">S</span>	SEWER
<span style="color: blue;">W</span>	WATERMAIN
<span style="color: blue;">---</span>	STORMWATER
<span style="color: purple;">---</span>	GAS LINE
<span style="color: black;">---</span>	RETAINING WALL
<span style="color: blue;">●</span>	STOP VALVE

<span style="color: green;">■</span>	TELSTRA / NBN PIT
<span style="color: orange;">●</span>	ELECTRICAL PILLAR
<span style="color: yellow;">●</span>	LIGHT POLE
<span style="color: yellow;">●</span>	SEWER MAN HOLE
<span style="color: blue;">●</span>	WATER METER
<span style="color: blue;">□</span>	DRAINAGE PIT
<span style="color: blue;">□</span>	KERB INLET PIT
<span style="color: blue;">⊗</span>	HYDRANT

## EASEMENTS

(FA)	EASEMENT TO DRAIN WATER 1.5 WIDE
(FB)	EASEMENT FOR SUPPORT 0.9 WIDE

## DISCLAIMER

- THIS PLAN HAS BEEN COMPILED FROM DESIGN PLANS AT THE SCALE/S STATED. IT IS RECOMMENDED THAT A SURVEY IS UNDERTAKEN PRIOR TO THE PREPARATION OF CONSTRUCTION DRAWINGS. THE PLAN IS SUITABLE FOR DESIGN ONLY & MAY NOT BE SUITABLE FOR ANY OTHER PURPOSE OR FOR USE AT ANY OTHER SCALES/S.
  - THE BOUNDARIES & SERVICES SHOWN ARE APPROXIMATE ONLY. FURTHER SURVEY WILL BE REQUIRED IF CONSTRUCTION IS TO TAKE PLACE ON OR ADJACENT TO THE BOUNDARIES.
  - UTILITIES LOCATIONS ARE SUBJECT TO FINAL APPROVAL.
- NOTE** • ANTICIPATED LOT CLASSIFICATION IS H2

**DELFS LASCELLES**  
CONSULTING SURVEYORS



260 MAITLAND ROAD, MAYFIELD NSW 2304  
P: (02) 4964 4886  
E: admin@delacs.com.au

DATE: 11.12.2025

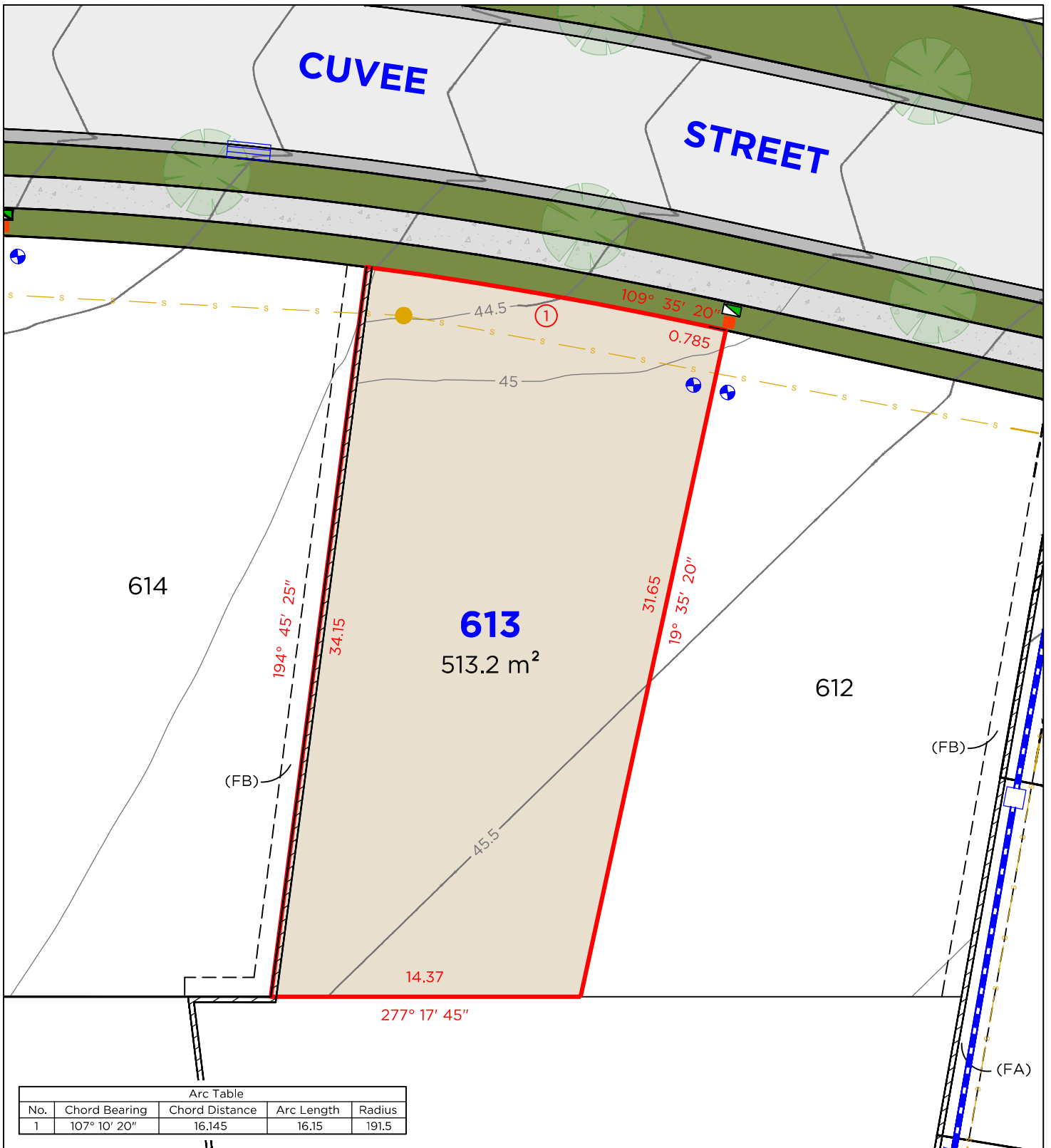
DATUM: A.H.D.

SCALE: 1:250 (A4)

PROJECT No. **25519**



# LOT 613



Arc Table				
No.	Chord Bearing	Chord Distance	Arc Length	Radius
1	107° 10' 20"	16.145	16.15	191.5

## LEGEND

	BOUNDARY LINE		TELSTRA / NBN PIT
	ADJACENT BOUNDARY		ELECTRICAL PILLAR
	EASEMENT		LIGHT POLE
	SEWER		SEWER MAN HOLE
	WATERMAIN		WATER METER
	STORMWATER		DRAINAGE PIT
	GAS LINE		KERB INLET PIT
	RETAINING WALL		HYDRANT
	STOP VALVE		

## EASEMENTS

- (FA) EASEMENT TO DRAIN WATER 1.5 WIDE  
(FB) EASEMENT FOR SUPPORT 0.9 WIDE

## DISCLAIMER

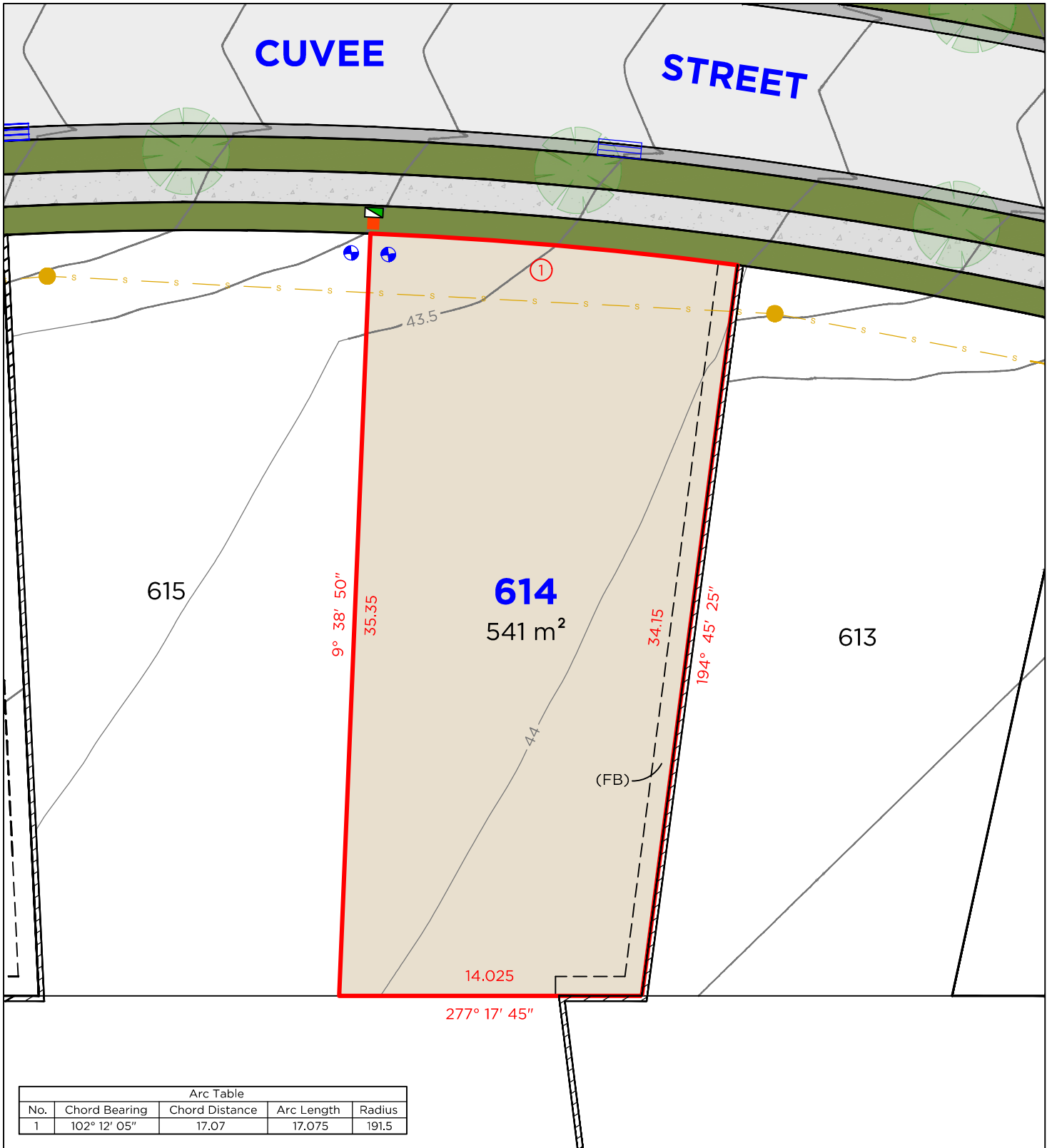
- THIS PLAN HAS BEEN COMPILED FROM DESIGN PLANS AT THE SCALE/S STATED. IT IS RECOMMENDED THAT A SURVEY IS UNDERTAKEN PRIOR TO THE PREPARATION OF CONSTRUCTION DRAWINGS. THE PLAN IS SUITABLE FOR DESIGN ONLY & MAY NOT BE SUITABLE FOR ANY OTHER PURPOSE OR FOR USE AT ANY OTHER SCALES/S.
  - THE BOUNDARIES & SERVICES SHOWN ARE APPROXIMATE ONLY. FURTHER SURVEY WILL BE REQUIRED IF CONSTRUCTION IS TO TAKE PLACE ON OR ADJACENT TO THE BOUNDARIES.
  - UTILITIES LOCATIONS ARE SUBJECT TO FINAL APPROVAL.
- NOTE** • ANTICIPATED LOT CLASSIFICATION IS H2

**DELFS LASCELLES**  
CONSULTING SURVEYORS





# LOT 614



## LEGEND

<span style="color: red;">—</span>	BOUNDARY LINE	<span style="color: green;">■</span>	TELSTRA / NBN PIT
<span style="color: black;">---</span>	ADJACENT BOUNDARY	<span style="color: orange;">■</span>	ELECTRICAL PILLAR
<span style="color: black;">---</span>	EASEMENT	<span style="color: red;">●</span>	LIGHT POLE
<span style="color: yellow;">S</span>	SEWER	<span style="color: yellow;">●</span>	SEWER MAN HOLE
<span style="color: blue;">W</span>	WATERMAIN	<span style="color: blue;">●</span>	WATER METER
<span style="color: blue;">---</span>	STORMWATER	<span style="color: blue;">□</span>	DRAINAGE PIT
<span style="color: purple;">GAS</span>	GAS LINE	<span style="color: blue;">□</span>	KERB INLET PIT
<span style="color: black;">---</span>	RETAINING WALL	<span style="color: blue;">⊗</span>	HYDRANT
<span style="color: blue;">●</span>	STOP VALVE		

## EASEMENTS

(FB) EASEMENT FOR SUPPORT 0.9 WIDE

## DISCLAIMER

- THIS PLAN HAS BEEN COMPILED FROM DESIGN PLANS AT THE SCALE/S STATED. IT IS RECOMMENDED THAT A SURVEY IS UNDERTAKEN PRIOR TO THE PREPARATION OF CONSTRUCTION DRAWINGS. THE PLAN IS SUITABLE FOR DESIGN ONLY & MAY NOT BE SUITABLE FOR ANY OTHER PURPOSE OR FOR USE AT ANY OTHER SCALES/S.
  - THE BOUNDARIES & SERVICES SHOWN ARE APPROXIMATE ONLY. FURTHER SURVEY WILL BE REQUIRED IF CONSTRUCTION IS TO TAKE PLACE ON OR ADJACENT TO THE BOUNDARIES.
  - UTILITIES LOCATIONS ARE SUBJECT TO FINAL APPROVAL.
- NOTE** • ANTICIPATED LOT CLASSIFICATION IS H2

**DELFS LASCELLES**  
CONSULTING SURVEYORS



260 MAITLAND ROAD, P: (02) 4964 4886  
MAYFIELD NSW 2304 E: admin@delacs.com.au

DATE: 11.12.2025

DATUM: A.H.D.

SCALE: 1:250 (A4)

PROJECT No. **25519**